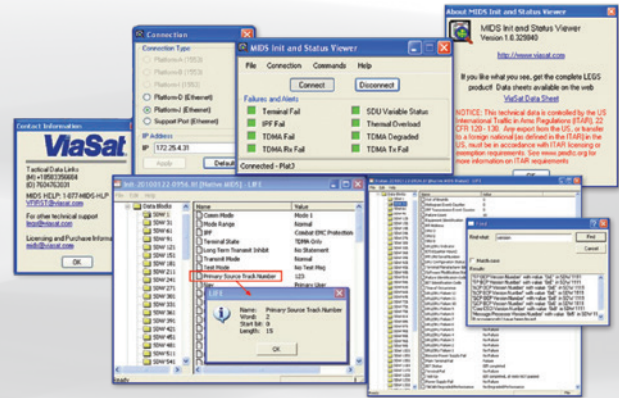


Register Online to Request Your Copy Today

<https://www.viasat.com/files/midsviewerform001pdf>

- » You will need to provide contact information
- » International customers will require a TAA



The MIDS Init and Status Viewer, commonly called the MIDS Viewer, provides a read-only viewer of the contents of the MIDS terminal's initialization (Init) and status data. It connects automatically to the terminal, defaulting to the most recent successful connection. Alternatively, the user can specify the desired connection type. Once connected, the MIDS Viewer automatically retrieves the Initialization Load and the Status Parameters, saves with dated filenames, and displays in separate windows with the parameters arranged in a folder-like format. Position the windows side-by-side to view both at the same time and click on the Starting Data Words (SDW). Settings are arranged in 30-word blocks for viewing convenience.

In the Init window, SDW 1 contains the power setting, primary track number, position data, etc. In the Status window, SDW 31 contains the BIT overview and SDW 1081 contains detailed SRU results.

To execute IBIT, open the Commands menu and select Run IBIT. Then select Get Status to retrieve IBIT results. Click on SDW 31 and SDW 1081 to view the IBIT results.

These displays are static; that is, they do not update in real time. To retrieve the current Init parameter settings, use the Commands menu to select Get Init.

If you don't know where a particular parameter is located, select Find from the Edit menu and type in a keyword. For example, search on "version" to locate the software version numbers and their SDW folder locations. You can double click on any entry to go directly to that parameter.

To view the ICD information on a parameter, right click on it and click Details to see the name, word number, start bit, and length in bits. Create your own folder of parameters by adding the ones you view most to the Favorites folder. To save the file under a different name, or open a previously saved file, use the File Menu.

Platform types are set by jumpers in the terminal host interface cable. If you are connected on Platform B, the MIDS Viewer will automatically download the terminal's BIT Log.

MIDS INIT AND STATUS VIEWER AT-A-GLANCE

- » Connect to MIDS via Platform A, Platform B, Platform I, Platform D, Platform J, or Support Port
- » View High-Level Failures and Alerts
- » View Detailed Init Data
- » View Detailed Status Data
- » Execute IBIT and View Results

SPECIFICATIONS

- » OS: Win XP
- » 1553-DDC or SBS PCMCIA and PCI Cards



CONTACT

6155 El Camino Real, Carlsbad, CA 92009-1699, USA

U.S. SALES
TEL 760 795 6334
EMAIL mids.us@viasat.com

INTERNATIONAL SALES
TEL +1 760 476 2675
EMAIL mids.international@viasat.com

TECHNICAL SUPPORT
TEL 866 496 1584
EMAIL tdl-techsupport@viasat.com **EMAIL** mids@viasat.com
WEB www.viasat.com/link-16