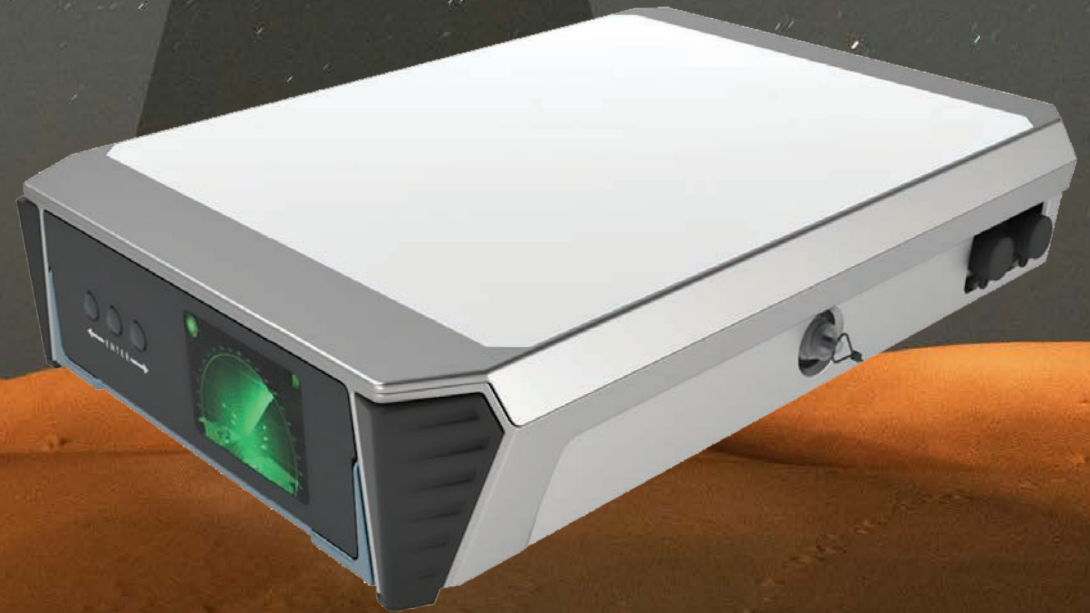


Viasat™

GX LITE



PORTABLE, FLAT-PANEL SATCOM TERMINAL FOR EXPEDITIONARY USERS

BUILT TO FIT USERS' REQUIREMENTS

No bigger than a laptop, Viasat's GX LITE terminal represents the latest in our customer-focused innovation. Developed in response to land expeditionary users' requirements, it readily translates to any "grab and go" situation and enables secure, flexible, high-throughput communications in both directions wherever your mission takes you.

AT-A-GLANCE

The terminal operates across the commercial Ka-band TX (29-30 GHz) and RX (19.2-20.2 GHz) and provides reliable access to Viasat's Global Xpress, a globally-available, high-throughput commercial wideband network. It leverages highly efficient flat panel antenna technologies from our trusted value-added manufacturer, GetSAT, and enables fully autonomous operation to transmit and receive high bandwidth data rates.



TERMINAL BENEFITS



GX LITE TERMINAL

Lightweight

Designed with mobile, global land users in mind, the terminal is lightweight and compact:

Weight: 8.6 kg

Size (W x L x D): 44.2 x 29.2 x 8.4 cm

Power

Low power consumption provides great flexibility in the field. Runs on batteries for up to 3 hours.

Portable

Can be hand carried and is easily transportable with a carrying case that fits into an overhead compartment.

Ruggedised

The ruggedised one-piece terminal is proven to operate in some of the toughest environmental conditions.

BI-DIRECTIONAL HIGH THROUGHPUT

The terminal delivers assured connectivity up to 8 Mbps Fwd and 4 Mbps Rtn maximum information rate (MIR) worldwide.

EASE OF USE, PLUG AND PLAY

- A user-friendly front panel interface and a Wi-Fi capability that users can readily enable and disable.
- Simple to operate, using self-guided pointing, web user interface (UI) and advanced self diagnostic feature.
- System deployment requires only a power connection and an Ethernet cable, no other cabling is needed.
- Users set up and operate the terminal in less than 5 minutes.

SPECIFICATIONS

Antenna Type:	Flat Antenna
Terminal Size:	44.2 x 29.2 x 8.4 cm
Panel Size:	26.9 x 24.9 cm
Terminal Weight:	8.6 kg
Frequency Range:	19.2-20.2GHz (RX) 29-30GHz (TX)
Gain:	35 dB (RX) 36 dB (TX)
Polarization:	RX LHCP / TX RHCP
Elevation Range	10 to 90°
G/T:	11 dB/K
BUC Output:	9W Linear
Max EIRP:	46 dBW
Global Service:	Up to 8 x 4 Mbps

ENVIRONMENTAL CONDITIONS

Temperature Operational:	-40°C to +60°C
Temperature Storage:	-55°C to +71°C
Water and Dust:	IP65

Mechanical Shock:

Transportation Shock: 20 min * 2 faces
Transit Drop: 26 drops

INTERFACES

2x BB-2590 battery power ports
1 x Power / Debug Button
3 x M&C buttons
1 x LCD display
Wi-Fi

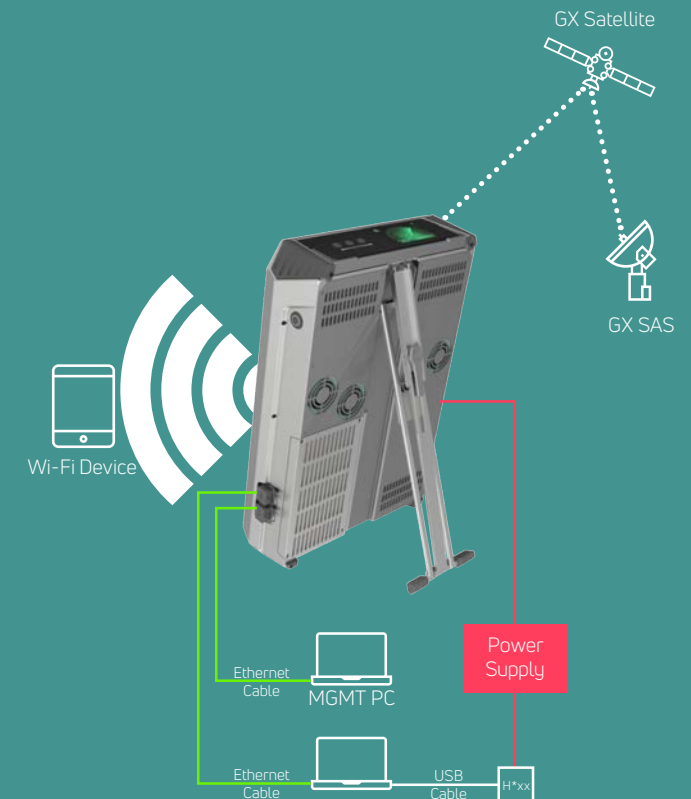
POWER

Standby:	149W
Battery:	197W
Plugin Power Supply:	240W
Can operate on VAC or VDC power	

ACQUISITION TIME

5 minutes (initial)
1 minute (re-acquisition)

EASY SETUP





While the information in this document has been prepared in good faith, no representation, warranty, assurance or undertaking (express or implied) is or will be made, and no responsibility or liability (howsoever arising) is or will be accepted by Viasat, Inc. or any of its officers, employees or agents in relation to the adequacy, accuracy, completeness, reasonableness or fitness for purpose of the information in this document. All and any such responsibility and liability is expressly disclaimed and excluded to the maximum extent permitted by applicable law. Coverage as shown on maps is an approximation and subject to change at any time.

Copyright © 2024 Viasat, Inc. All rights reserved. Viasat, the Viasat logo and the Viasat Signal are registered trademarks in the U.S. and in other countries to Viasat, Inc. All other product or company names mentioned are used for identification purposes only and may be trademarks of their respective owners.

GX LITE August 2024