

Viasat 13.5 meter Ka-band antenna is ideally suited for the latest high capacity Ka-band satellites. The antenna system offers exceptional broadband support to deliver high-speed Wi-Fi connections for residential, commercial and government services.



Viasat's 13.5 meter Ka-band antenna is ideally suited for high-performance geostationary Ka-band gateway applications. With decades of experience going into the design, its performance, reliability and maintainability are unmatched.

The shaped Cassegrain antenna with precision machined subreflector provides superior gain and sidelobe performance at Ka-band frequencies. Improved high-precision, stretch formed panels are supported by stiff steel radial trusses attached to a large central hub. The reflector back structure and spars are designed to exacting Ka-band rigidity requirements to provide optimum performance under a wide range of environmental conditions. All aluminum reflector panels, coated with a solar diffusive white paint, minimize thermal effects at Ka-band.

The oversized hub is specifically designed to support multiple redundant suites of HPAs, BUCs and receive chain configurations. The extra-large doorway allows easy access from the large extended work platform for convenient maintenance of all the electronics. The redundant HVAC system maximizes the electronics Mean Time Before Failures (MTBF) and service availability.

The rugged steel mount delivers Ka-band pointing accuracy in adverse wind conditions. The pedestal design features a precision azimuth bearing with dual drivers for very low backlash.

Viasat's proven antenna control system offers full DC servo performance with monopulse autotracking for unparalleled tracking performance. For quick access and service the control system is conveniently located on the work platform.

13.5 METER AT-A-GLANCE

- » Antenna patterns compliant with FCC, ITU, ANATEL, and Eutelsat regulations
- » High efficiency shaped Cassegrain optics
- » Both 2-port and 4-port circular and linear polarized feeds available
- » Precision structural steel mount
- » Easily accessible hub for electronics packages with hinged door access (accommodates up to 8 HPAs)
- » Standard accessories include large work platform and stairs, foundation template and anchor bolts, lightning protection kit, rain blower
- » CE compliant
- » Low maintenance with auto lubrication and damage resistant feed window

Options

- » Hot air de-icing
- » HPA/LNA/converter mounting
- » Environmentally controlled hub
- » Alternate frequency band
- » Work platform ladder
- » Equipment hoist
- » Elevation counterweights
- » Defrost (feed and subreflector)
- » TT&C capabilities
- » Radome
- » Installation and maintenance services

13.5 Meter Ka-band Broadband Gateway Earth Station Antenna

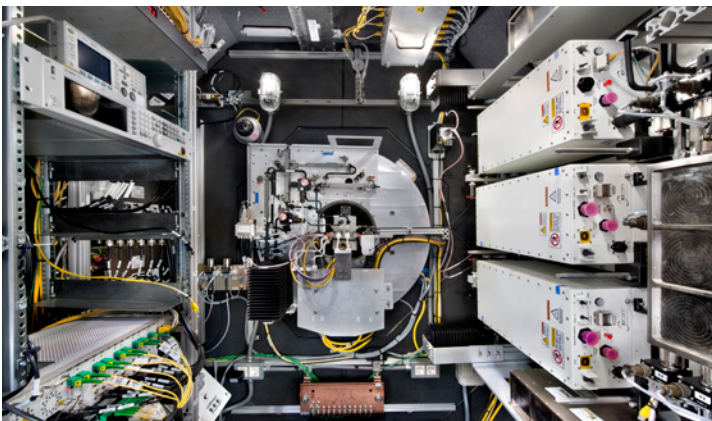
SPECIFICATIONS

ELECTRICAL

Operating Frequency¹ (GHz)	
» Receive	17.7 to 20.2
» Transmit	27.0 to 30.0
Gain	
» Receive	67.2+20 Log (F/20.2) dBi (ref to feed receive port output)
» Transmit	70.2+15 Log (F/30) dBi (ref to feed transmit port input)
G/T (30° elevation, clear sky)	43.0+20Log(F/20.2) dBi/K (including 1:2 redundant 120 K LNA plate and feed to LNA waveguide)
Beamwidth (3 dB)	
» Receive	0.07° nominal
» Transmit	0.05° nominal
Feed System²	
» 4-port TX/RX circular polarization	
» TE21 tracking coupler	
» WR34 TX ports/WR42 RX ports	
» 600 W CW transmit power per port	
» 85 dB TX/RX isolation	
» 18 dB TX/TX and RX/RX isolation	
Transmit and Receive VSWR	1.25:1
Polarization³	
» Sense	Simultaneous RHC & LHC
» Axial Ratio	1.06:1 (0.50 dB)
Pattern Envelope	Compliant to ITU 580-5, FCC 25.209, ANATEL
Tracking Accuracy (Monopulse)	0.0034° RMS BRE, 45 mph gusting to 60 mph winds

MECHANICAL

Optics	Dual shaped cassegrain, axis-symmetric
Reflector	
» Diameter	13.56 meter; 44.5 ft
» Panels	36, precision aluminum, 2 tiers
Mount Type	Elevation over azimuth
Axis Drives	
» Elevation	Jackscrew, 0.20%/s
» Azimuth	Geared bearing dual drive, 0.5%/s
Antenna Travel	
» Elevation	0° to 90° continuous
» Azimuth	±100° continuous Option for ±270° continuous
Hub Enclosure	
» Width	80.5 in.; 205 cm
» Height	75.5 in.; 192 cm
» Depth	48 in.; 121 cm
ENVIRONMENTAL	
Temperature	
» Operational	-30° to +55° C
» Optional Range	-40° to +55° C
Wind	
» Operational	45 mph gusting to 60 mph; 72 km/h gusting to 97 km/h
» Drive to Stow	80 mph; 129 km/h
» Survival	90 mph any position, 150 mph stowed; 145 km/h any position, 240 km/h stowed
Atmospheric Conditions	Salt, pollutants, and corrosive contaminants as conditions found in coastal and industrial areas
Deicing (Optional)	
» Main Reflector	Hot air
» Subreflector	Resistive heaters
» Feed	Resistive heaters



LARGE HUB FOR EASY ACCESS TO ALL RF ELECTRONICS

CONTACT

SALES

TEL 888 842 7281 (US Toll Free) or +1 760 476 4755 EMAIL insidesales@viasat.com WEB www.viasat.com/antenna-systems

Copyright © 2017 Viasat, Inc. All rights reserved. Viasat and the Viasat logo are registered trademarks of Viasat, Inc. All other product or company names mentioned are used for identification purposes only and may be trademarks of their respective owners. Specifications and product availability are subject to change without notice. ¹Other frequency bands within 17.7 to 21.2 GHz and 27.0 to 31.0 GHz bands available. ²Other feed configurations available. ³Linear and linear/circular switchable feeds available. 466511-171102-019

