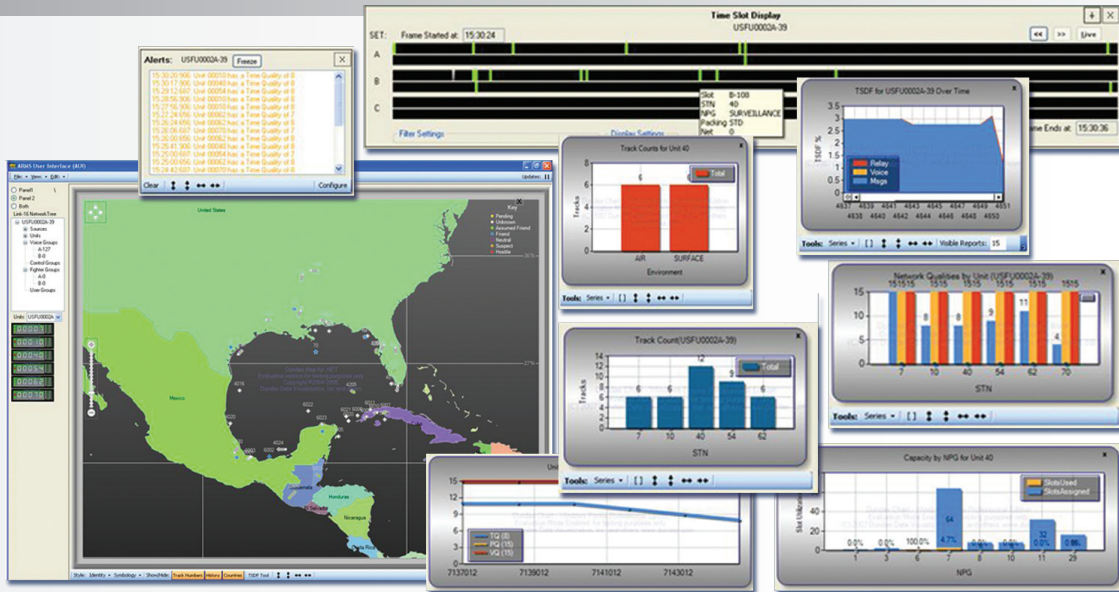


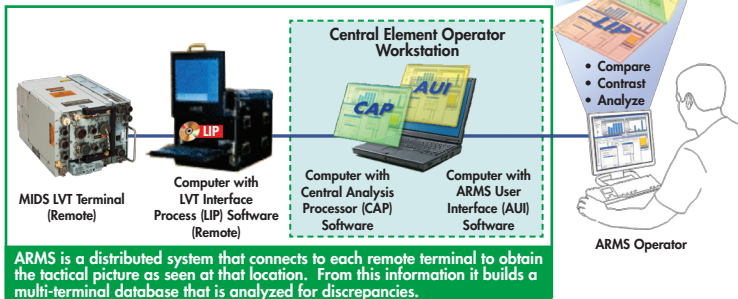
INTEGRATING NETWORKS

ARMS connects to multiple remote terminals to obtain the tactical picture as seen at each location. This information then builds a multi-terminal database that is analyzed for discrepancies.



The job of the Link 16 Network Manager is to plan, manage, modify, and troubleshoot the tactical data link network implemented by JTIDS and MIDS terminals. Existing systems employ a single viewpoint solution. ViaSat has developed a distributed approach that connects to each remote terminal to obtain the tactical picture as seen at that location. From this information it builds a multi-terminal database that is analyzed for discrepancies. This system is called the Amalgamated Remote Management System (ARMS) and integrates our Link 16 Environment Gateway Manager (LEGS) and Link Evaluation and Management System (LEMS) systems with a powerful network analysis capability.

ARMS integrates multiple views of a network that is maintained over a large geographical area and locked onto GPS time. A delayed synchronization capability on a single terminal is not required to detect unauthorized time slot reuse, the network nodes themselves perform this function for any units within site of more than one ground station. ARMS operates over a widely distributed geographical installation and accepts received data from each terminal node, integrating this data and analyzing it to detect and identify anomalies.



FEATURES

- Enable distributed data collection by implementing a multi-homed monitoring system
- Allows coordinated network analysis from multiple viewpoints
- Provides a synthesized analysis of the network architecture
- Plug-n-Play capability – no changes to the existing system of terminals should be necessary
- Works with all MIDS terminals
- Scalable from 1 to greater than 5
- Provides up-to-date system wide status with drill down capability of terminal BIT
- Provide detailed IPF causal analysis and fault isolation
- Functions as an anomaly-event-driven, operator-alert-based interface to facilitate expeditious detection and correction of network problems

SOFTWARE ARCHITECTURE

ViaSat's ARMS is built with three functional architectural pieces:

- Link 16 Interface Processes (LIPs)
- Centralized Analysis Process (CAP)
- ARMS User Interface (AUI)

Ordering Information
Part Number: 1076447

U.S. Sales
Tel: 760.795.6334
Email: mids.us@viasat.com

International Sales
Tel: +1.760.476.2675
Email: mids.international@viasat.com

Technical Support
Tel: 866.MIDS.LVT
Fax: 760.795.1045
Email: mids@viasat.com
Web: www.viasat.com/mids