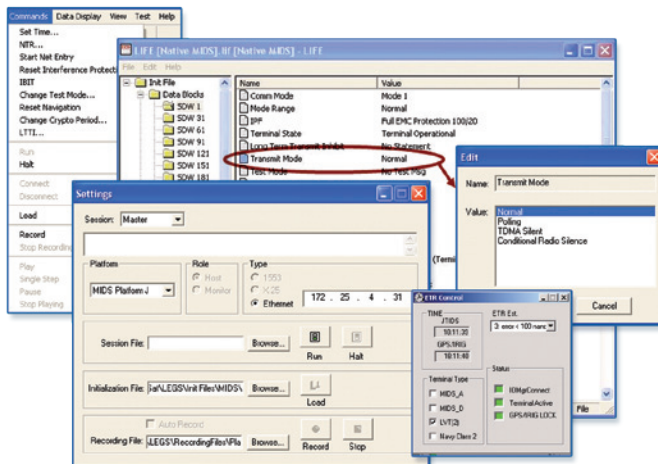


The LEGS software application is an essential MIDS support tool. Prime developers use the software in the integration of MIDS terminals for ground facilities and mobile platforms. Field service engineers rely on this tool for terminal maintenance and troubleshooting. Test facilities employ LEGS software for Link 16 system performance measurement and evaluation. Instructors leverage the application for MIDS training.



INITIALIZE AND CONTROL

The LEGS tool supports the Ethernet, X.25, 1553, and Support Port interfaces of all MIDS terminals. The application implements all the major platform types including Platform A, B, D, I, J, and MIDS on Ship (MOS). The software also implements many of the Class 2 interfaces including Army Class 2M, Navy Class 2 Airborne and Shipboard, Air Force Class 2 (F-15), and LVT(3) FDL.



Included with the application is the Link 16 Initialization File Editor (LIFE). This utility allows you to view initialization files, extract initialization data directly from the terminal, save a copy, even update parameters in real time. Most NDF file formats are implemented. Descriptions of fields and available field settings are displayed in a file structure format in English, making it easy to verify terminal settings. Fields that are set or changed frequently, such as Source Track Number, Stacked Net Numbers, Power, and Antenna settings may be saved in Favorites.

Commands used frequently such as Load Terminal, Set Time, and Start Net Entry are available as icons on the toolbar. Other commands such as NTR Enable and Disable, Reset IPF, Initiate IBIT, Change Test Mode, Reset Navigation, Change Crypto Period, and Long Term Transmit Inhibit are accessed through the main menu.

Licenses are available for installation on customer-furnished equipment after initial purchase.

PRODUCT HIGHLIGHTS

- » Terminal Initialization Control
- » Terminal Status Monitoring
- » Detailed Recording
- » MIDS Re-programmer
- » Scenario Generation
- » Situation Awareness
- » Gateway to up to 8 Client Applications
- » Multi-Terminal Control
- » Network Management

SUPPORTED TERMINAL TYPES

- » MIDS-LVT(1) Platform A, B, D, I and Support Port
- » MIDS-LVT(2) X.25, Platform J, JREAP-C and Support Port
- » MIDS on Ship (MOS) Platform M and Support Port
- » MIDS-LVT(3) FDL and Support Port
- » Class 2 Navy Shipboard, Navy Airborne, Army 2M, and USAF F-15
- » Small Tactical Terminal (STT) KOR-24

LEGS-LITE

A low-cost version of the LEGS software that does not include the scenario generation or situation display capabilities is available.

DOCUMENTATION AND TRAINING

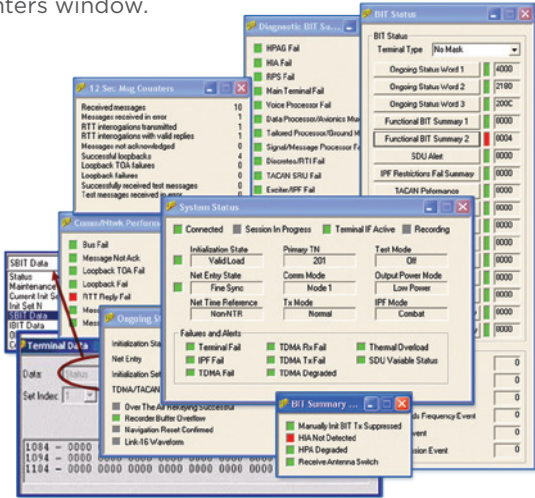
In addition to the online help, the LEGS software is delivered with a User Manual and Installation Manual. ViaSat offers a 3-day introductory training course on the operation of this application. Advanced courses are also available.

TAILORED APPLICATIONS

ViaSat can tailor LEGS Remote Interface Modules (RIMs) to support your special requirements. We have developed RIMs for GPS testing, ETR testing, OTAR testing, Voice testing, and Navigation Testing. And, we have an API to support automated testing using products such as LabView and VEF-Pro. An ICD is available by special request. If you have special needs, let us know.

OBTAIN TERMINAL STATUS AND DETAILED BIT RESULTS

High-level status data is available in the System Status window, with detailed data available through the BIT Status window. BIT results are color-coded red or green, and masks are available based on terminal type to gray out BIT results that are not applicable. Every 12 seconds the terminal provides information on the messages processed and this summary can be viewed on the 12-Second Message Counters window.



Further status is available in hex format through the Terminal Data window, including SBIT, IBIT, and OBIT as well as the contents of memory locations.

VIEW, RECORD, AND REPLAY LINK 16 DATA

Scroll received messages, and when connected to the support port, view the loopback of transmitted messages! Messages formatted with the Enhanced Throughput packing structure are also displayed, in a user-selected color. Message data exchanged on the host interface may be recorded, or detailed performance data may be obtained from the Support Port and recorded. Data recordings may be replayed starting at any point within the recording and replayed at speeds from 1/8 to 8 times normal. Pause and restart at any point. Analyze these recordings with ViaSat's Analysis Support Tool (VAST) provided with the LEGS application, or with the Lockheed Martin STASYS analysis tool, MANDRIL.



CREATE SCENARIOS AND MAINTAIN SITUATIONAL AWARENESS

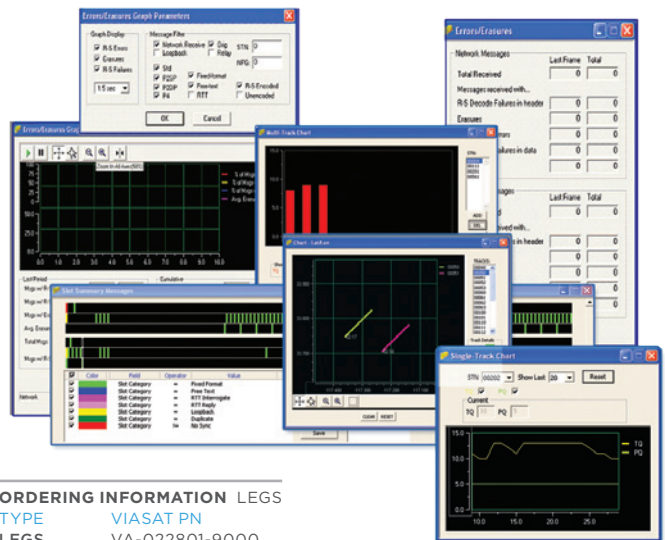
ViaSat's Scenario Generation utility allows you to define over 500 entities, specifying track numbers, STN numbers, and defining platform kinematics. Select a common path such as circle or racetrack, or specify waypoints. Specify platform type, environment, identity, mode codes, strength, and call sign. Generate PPLI position reports and surveillance track reports and script their time of appearance and disappearance.



The LEGS Situation Display supports both geotiff and NGA Compressed ADRG maps. View JUs and tracks in user-defined Symbology based on MIL-STD-2525B with a map underlay. Hook tracks and obtain data readouts.

MONITOR NETWORK PERFORMANCE

View time slot activity in real time, color-coding the slots by NPG, STN, Packing Structure, or other user-defined criteria. View Errors and Erasures numerically and graphically.



ORDERING INFORMATION LEGS
 TYPE VIASAT PN
 LEGS VA-022801-9000
 LEGS-LITE VA-022801-9500



CONTACT

VIASAT, INC., 6155 EL CAMINO REAL, CARLSBAD, CA 92009

US SALES
 TEL 760.795.6334 EMAIL MIDS.US@VIASAT.COM

INTERNATIONAL SALES
 TEL +1.760.476.2675 EMAIL MIDS.INTERNATIONAL@VIASAT.COM

TECHNICAL SUPPORT
 TEL 866.MIDSLVT FAX 760.795.1045 EMAIL LEGS@VIASAT.COM WEB WWW.VIASAT.COM/MIDS

Copyright © 2009-2011 ViaSat, Inc. All rights reserved. ViaSat and the ViaSat logo are registered trademarks of ViaSat, Inc. LEGS is a trademark of ViaSat, Inc. All other trademarks mentioned are the sole property of their respective companies. Specifications and product availability are subject to change without notice. 120124-028

PRELIMINARY

